

YOKE REPLACEMENT INSTRUCTIONS

Tools Needed

3/8" & 1/2" impact guns or ratchets
3/8" drive, 3" extension
3/8" drive, 15 mm wobble socket
3/8" drive, 15mm socket
15mm wrench

22mm wrench & socket
6mm allen/hex socket, 3/8" drive
13 mm wrench
5/16" nut driver socket for drill
Drill & 3/16" drill bit (for storage box)

***PLEASE NOTE THAT ANY REPAIR WORK NOT PERFORMED BY A LICENSED REPAIR SHOP IS DONE AT THE RISK AND LIABILITY OF OWNER ***

Step 1:

Remove storage box by removing 6 screws from inside box



Step 2:

Remove damper (shock) from yoke



Step 3:

Place 2 jack stands on either side under front of side frames



Step 4:

Remove cable & winch plate from yoke

CAUTION MAKE SURE POD IS ALL THE WAY DOWN BEFORE REMOVING WINCH



Step 5:

- Remove amber lights and bezels
- Pull plug and wire out through hole in yoke bracket till it is past yoke



Step 6:

Pull wiring out of tongue from rear of tongue underneath deck of trailer



Step 7:

Lock swivel jack in upright position



Step 8:

- Remove tongue bolt
- Remove locking pin



- Lower tongue out and set to side

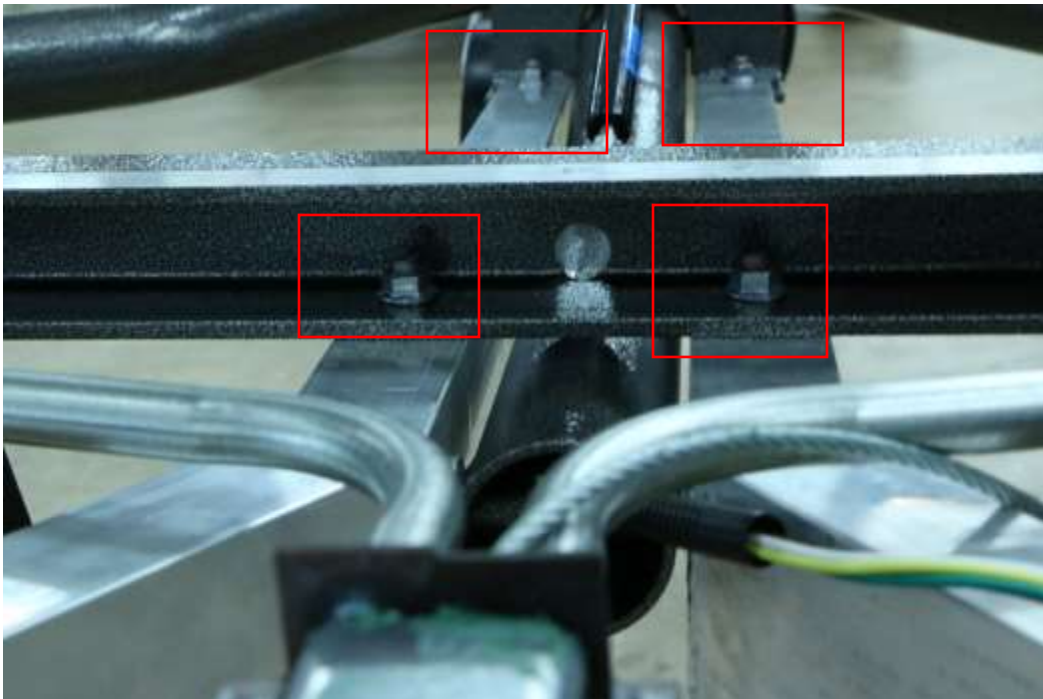
Step 9:

Remove two front stabilizer jacks from yoke by removing bolts



Step 10:

Remove bolts and nuts (4) from c-channels



Step 11:

Remove bolts from yoke side brackets from side frames

*Note T-Slot nut plates will fall out of bottom of side frame)



Step 12:

Remove lift tube bolts (2) through yoke and side frames



Step 13:

Remove yoke bracket bolts (4) from side frames



Step 14:

Remove/cut 3M tape strip between yoke and deck



Step 15:

Slide yoke out from front of side frames

Re-Assemble in reverse order as removal

*Note apply new 3M tape to yoke before installing (see picture below). Leave one end of red tape seal sticking out from deck then remove once installed by pulling strip away then pressing deck into place.



Once installed new holes will have to be drill through existing holes in storage box into yoke as shown below

