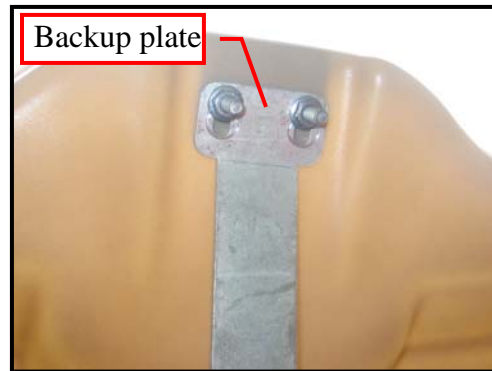


Adjusting the Front Storage Box Lid



If the gap between the lid and the front storage box is too large it can be adjusted easily.

Loosen the two bolts holding the strike plate on the front of the storage box. Flex inward the portion of the storage box around the strike plate. This will cause the bolts to slide upward in their slots in the backup plate. Then retighten the bolts to secure them at their new locations in the slots.

Check the lid to see if it closes and latches properly. Readjustment may be necessary if the latch is too tight.

