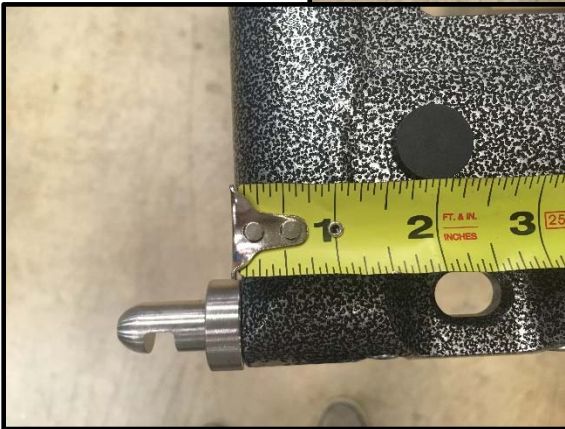


**Step 23:** In accordance with the following instructions use a drill and a 5/16" drill bit to drill one hole in the rear of each bed platform frame to support the vestibule (orange) tent pole.

**Step 24:** On each of the two bed platform frames make a mark for the center point of the hole 15" from the *outside edge* of the bed platform frame and 5/8" from the *rear edge* of the frame.



**Step 25:** Drill each hole and, if necessary, remove any sharp edges from around the hole with a file.