

Maintenance: Frequency – As Needed

Cleaning: General Cleaning

Trailer can be cleaned using a high pressure sprayer in a car wash or a soft sponge or rag and mild detergent.

Do not use abrasive cleaners or hard scrubbing sponges or brushes.

For stubborn spots, a non-abrasive, orange degreasing cleaner works well*.

**Greased Lightning and Seventh Generation brands are used for reference only, SylvanSport does not officially endorse these products*



Cleaning: Tent

Clean tent with a gentle fabric cleaner and a soft sponge*.

**Woolite brand used for reference only, SylvanSport does not officially endorse this product*



Maintenance: Frequency - Before Each Use

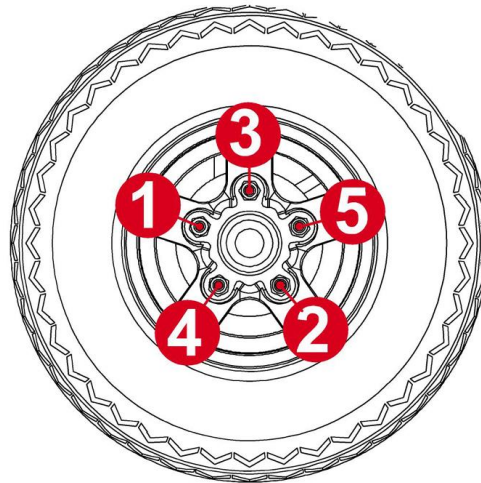
Wheels: Check Lug Nuts

Ensure lug nuts are tightened properly using a 3/4" tire iron or 3/4" deep socket wrench*.

Tightening the lug nuts should be done in stages going around the bolt circle in a standard crossing pattern. Tighten each lug nut to 20-25 ft-lbs for the first stage. Stage 2: 34 - 40 ft-lbs. Stage 3: 50 - 75 ft-lbs.

When first installing a wheel, the lug nuts should be checked after 10 miles, 25 miles, 50 miles and periodically after that.

**It is recommended that you keep a 3/4" Deep Socket Wrench with a 1/2" square drive with you while traveling with the 'GO'*



Wheels: Check Tire Pressure

Tire pressure should be 50psi (cold). Spare should be inflated to 90 psi (cold)



Maintenance: Frequency – 12,000 Miles or 12 Months

Wheels: Lubricate the Hubs

Lubricant level can be checked by looking at the red circle in the center of the bearing protector. If the red circle is flush with the surface, the grease level is low.

Attach a hand grease gun to the fitting. *An automatic grease gun will destroy the hub's inner seal.*

As you add grease the red circle will begin to protrude from the bearing protector.

Underneath you will begin to see an orange ring appear. When the orange ring is visible, but still below the surface, the grease level is sufficient.

NOTE: Multipurpose No. 2 grade lubricant is recommended.



Maintenance: Frequency – 12 Months

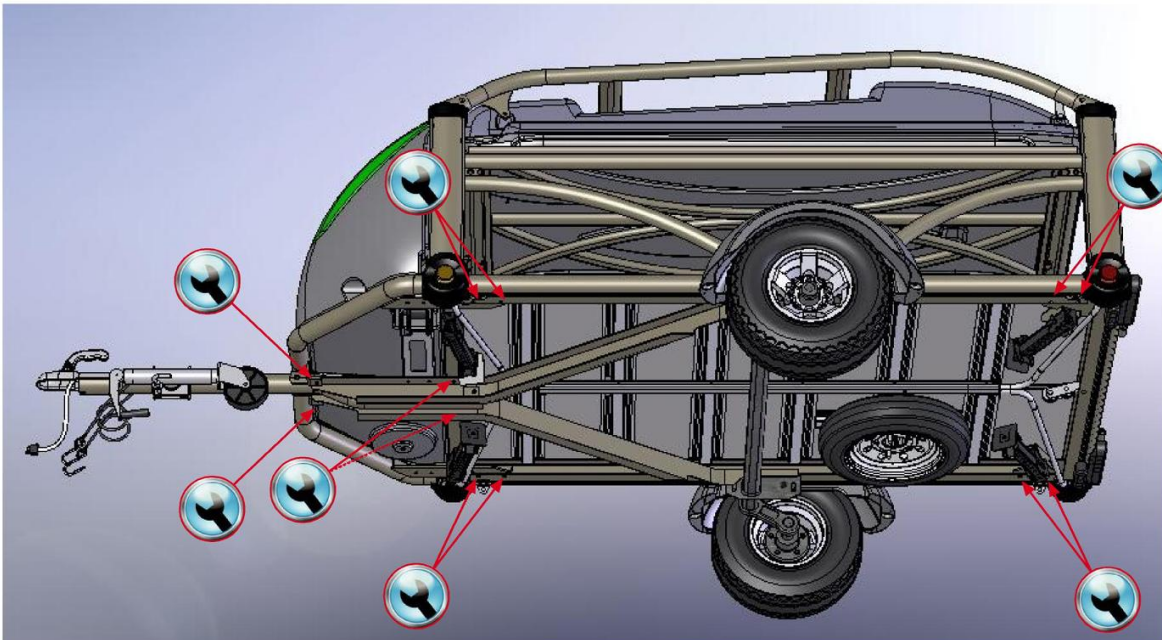
Frame: Check Security of Bolts

Beneath the trailer deck are bolted connections at the frame junctions.

These bolts should be checked to ensure none have loosened.

Note: All Bolts used on the 'GO' are metric.

The illustration below shows the locations of the bolted connections.



Maintenance: Frequency – 12 Months

Lift System: Lubricate Lift System

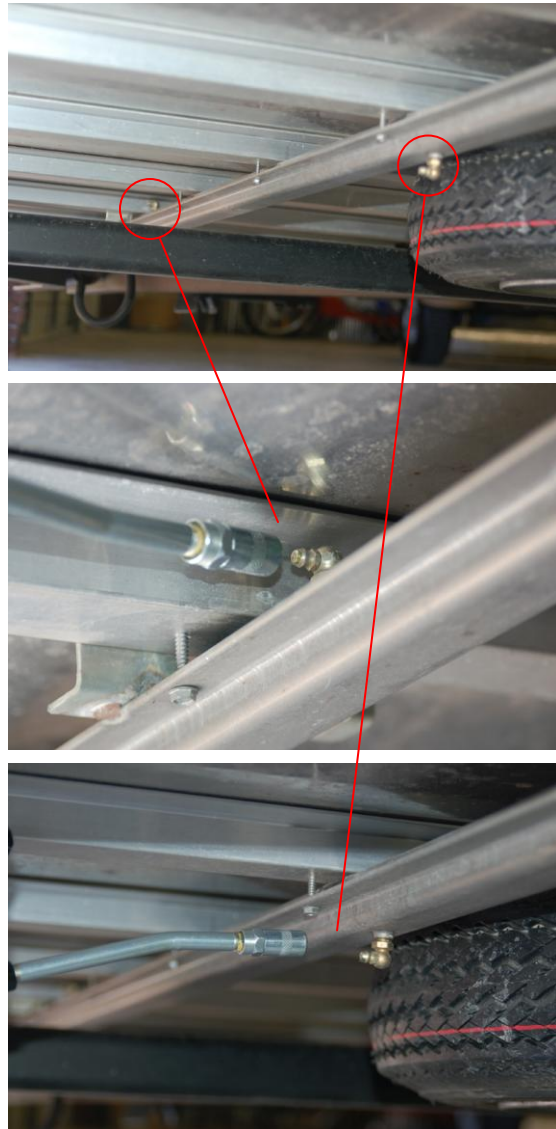
The lift master tube that runs in the center of the frame beneath the deck has two grease fittings.

Start with the Rack and Tent Pod all the way down. Using a grease gun pump 4 - 5 times injecting grease into the fitting

Crank the trailer to raise the Rack and Tent Pod a few inches and pump the gun 2 - 3 times. Repeat this until the Rack and Tent Pod is fully extended.

Lower the Rack and Tent Pod and repeat steps for the other grease fitting.

NOTE: Multipurpose No. 2 grade lubricant is recommended.



Lift System: Lubricate Telescoping Tubes

A silicone lubricant or similar can be wiped onto the lift tubes to remove grime and improve operation.



Maintenance: Frequency – 12 Months

Lift System: Cable

Inspect winch and cable located under front storage box.

Check that winch is functioning properly and cable is not cut or frayed.

Bottom view of Front Winch →



Inspect Pulley and Cable located under Deck at rear of 'GO'.

Bottom view of Rear Pulley →



Storage Box: Check Security of Screws

Check screws holding the front storage box to frame.

There are (six) 5/16" screws on the inside bottom of the box.

There are (two) 10mm screws at the top of the Latch Support Bracket.

All should be snug.

