

GO Tailgate Tube Replacement

This technical bulletin describes the process for replacing the tailgate tube on the GO.



As shown in Figure 1, included in your replacement kit should be:

1. 2x Grommet Bumpers
2. 1x Lamp Connector with Light
3. 1x 10" Wire Loom
4. 2x #10 x1-1/2 Hex, Self-drilling Screw
5. 2x .25" x 1.0" Washer
6. 2x #10 Flat Washer
7. 2x #10-32 x 1.25" AB Screw
8. 2x 5/16" x 2-1/2" Safety Pin with Tab
9. 1x Individual Loctite Blue Packet

Not Included but needed for assembly: Drill, Electrical Tape, A Level

A Mallet may be needed

To begin, be sure your GO is on level, reliable ground.

1. Disconnect the wire harness connecting the tailgate to the rest of the GO. The wires are connected under the passenger side of the tailgate.
2. Remove the two safety pins that connect the tailgate to the GO. Place these aside and remove the tailgate from the trailer.
3. On a flat, sturdy surface, remove the four screws connecting the tailgate tube to the step.
 - a. Two screws are on the top of the platform of the step on the either side as seen in Figure 2.
 - b. Two screws are behind the license plate as seen in Figure 3.

Figure 2



Figure 3



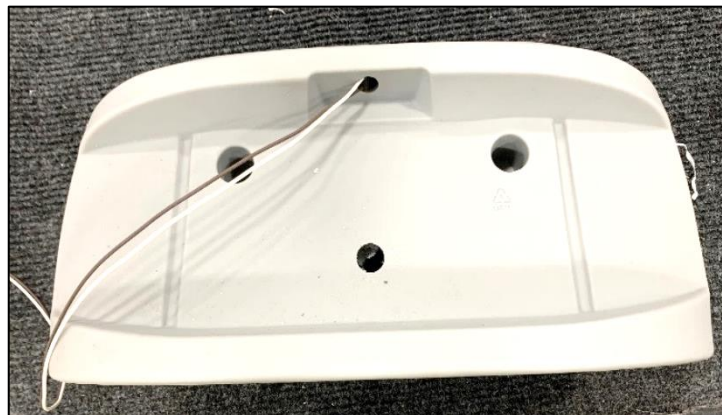
GO Tailgate Tube Replacement

4. Push the wiring back through the tailgate tube, allowing the step and the tailgate tube to be disconnected. Remove the tailgate tube from the step. Set the step aside (Figure 4).
5. Remove the license plate light and wiring from the plastic step (Figure 5).

Figure 4



Figure 5



GO Tailgate Tube Replacement

Figure 6

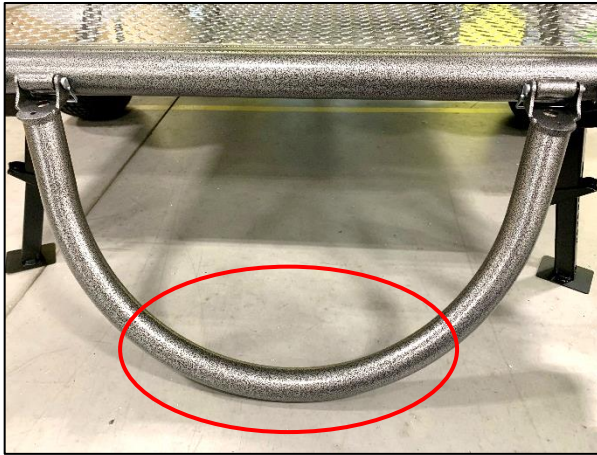


Figure 7



Figure 8



6. Attach the new tailgate to the GO using the two safety pins included in the replacement kit. When attaching the tailgate tube, be sure the orientation is correct. Refer to Figure 6. The hole on the tailgate tube for the wiring harness to connect the step and the tube should not be seen once placed on the GO.
7. Place the plastic step on the tailgate tube and, using a level, find where the step should be mounted. You want the step to be level in all directions. Once you find where the step should be placed, mark the tailgate tube through both holes on the top platform of the step where the screws were previously removed. The holes are shown in Figure 7.

8. Remove the step and the tailgate tube from the GO.
9. Feed the license plate wire through the plastic step from the license plate side to the rear hole that aligns with the tailgate tube. Center the tag light against the plastic step. Be sure the light is facing where the license plate will sit and the metal casing is on the outside. Use the screws in the package with the tag light to install. The correct orientation is seen in Figure 8.

GO Tailgate Tube Replacement

Figure 9



Figure 10



10. Feed the wires through the opening in the tailgate tube down the side of the tube as in Figure 9.
11. Using a stiff wire, pull the wires out the larger hole of the end of the tailgate tube. The wires should come out of the passenger side of the tailgate when the tailgate is installed on the GO.
12. Place a rubber grommet in each of the holes on the end of the tailgate tube as shown in Figure 11. A mallet may be needed to push it in all the way.

Figure 11



13. On a steady surface, drill a hole through the step into the tailgate tube through both holes you previously marked. Be sure not to drill through the front and back of the tailgate tube.
14. Once each hole has been drilled, put Loctite on the #10 x 1-1/2" hex self-drilling screws. Install one #10 flat washer and one screw into each of the drilled holes shown in Figure 12.

Figure 12



GO Tailgate Tube Replacement

15. Flip the tailgate over and install the #10-32 x 1.25" screws and .25" x 1.0" washers on the side of the license plate, as seen in Figure 13, to finish attaching the step to the tailgate tube.
16. Place wire loom over the wires. Once it is on, slide the wires back into the tailgate tube about an inch (Figure 14). Using electrical tape, tape about two inches of the wire loom to close it. The amount taped is shown in Figure 15. It only needs to be taped tight enough to bring both sides of the wire loom together and stay closed.

Figure 13



Figure 14



Figure 15



Figure 16



17. Place the assembled tailgate on the GO using the safety pins. Attach the pins so that it connects beneath the assembly so it will not be in the way when stowing the tailgate upright. This is seen in Figure 16.
18. Connect the wire harness from the tailgate to the GO.

Figure 17

