

SylvanSport Technical Bulletin #15 – Hub Replacement

Tools Required

Flat head screwdriver, hammer or rubber mallet, channel locks or adjustable wrench, rags

To remove the existing hub:

Use a flat head screwdriver to pry off the rubber grease fitting cap. Set aside.



Use a hammer or mallet to dislodge the aluminum cap. Rotate the hub while tapping to help loosen. A screwdriver can be used as well to pry it free. Don't worry about damaging the cap as there is a replacement with your new hub.



Once the cap is removed use the screwdriver to pry off the brass retaining ring.



SylvanSport Technical Bulletin #15 – Hub Replacement

Use your fingers to remove the nut holding the hub on to the shaft. You should be able to remove it by hand, but a wrench may help.

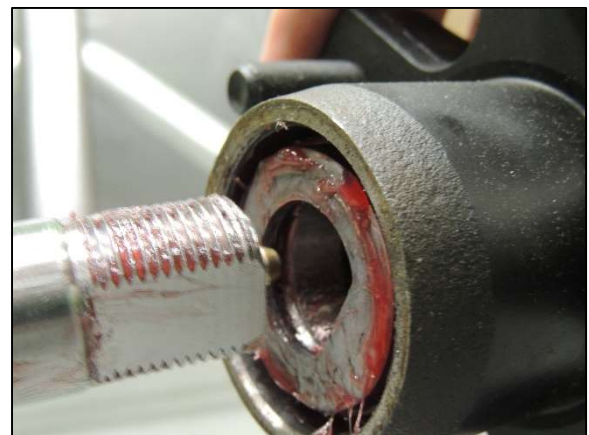


Pull the hub toward you to slide it off the shaft.



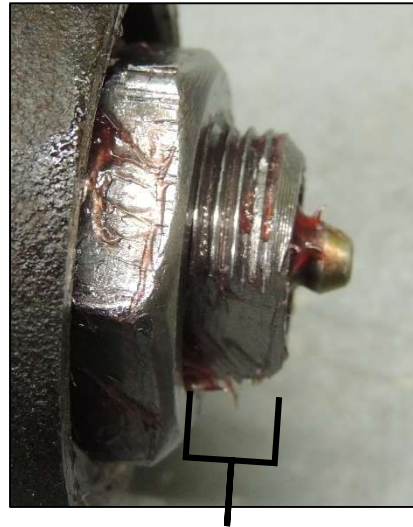
To install the new hub:

Align the flat edge on the shaft with the flat side of the washer and slide the hub onto the shaft.



SylvanSport Technical Bulletin #15 – Hub Replacement

Ensure that the new hub is pushed all the way onto the shaft and that the washer and bearing are pressed in firmly. Install the nut, tightening it with the wrench, then loosen it slightly and snug it back down finger tight.



If the hub is correctly installed you should have 3-4 threads showing between the top of the nut and the end of the shaft



Install the brass retaining clip over the nut, aligning the flat edges on the clip and the shaft.



SylvanSport Technical Bulletin #15 – Hub Replacement

Use the hammer or rubber mallet to gently tap the aluminum cap on, ensuring that it is seated completely against the hub housing.



Press the rubber grease fitting cover on to the aluminum cap, taking care not to pinch the edges in.



Your hub replacement is now complete!