

Table/Bed Platform Storage

Figure 1



This technical bulletin describes the process for properly stowing and securing two (2) table/bed platforms.

Unzip the screen ceiling in the GO all the way and let it hang against the back wall.

Place the two panels so that the large flat surfaces face one another, lift, and hang on the pin on the rotating bar at the top of the back wall as shown in Figure 1.

Attach the table retainer clip to the pin, securing the tables to the rotating rod, as shown in Figures 2 & 3. Ensure that the clip retracts fully allowing the pin to seat completely.



Figure 2

Figure 3

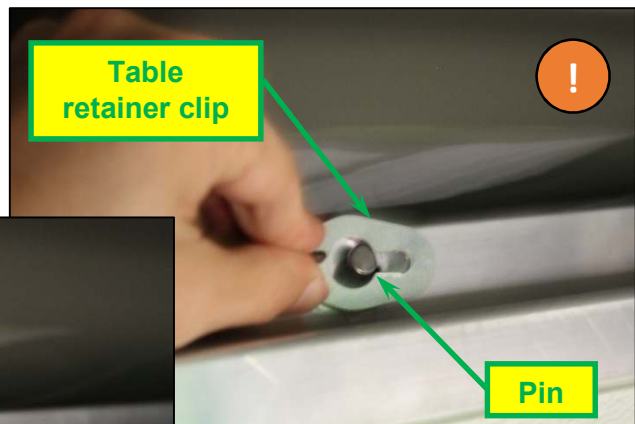
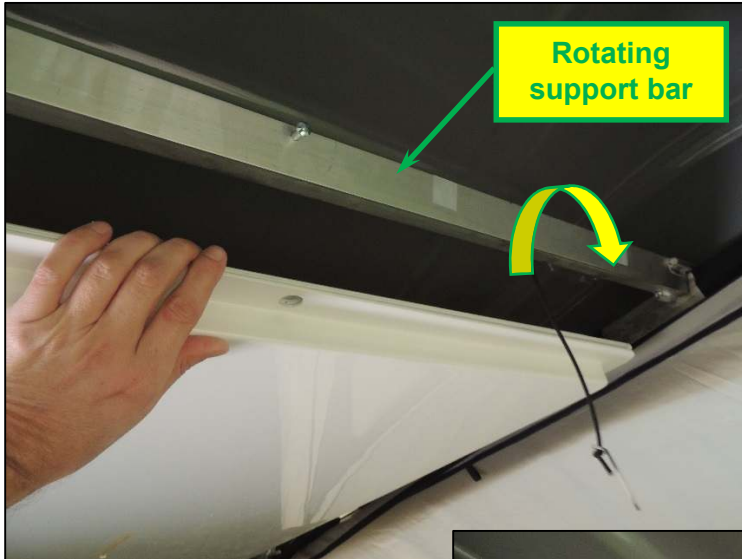


Table Storage



Rotate the panels up to the ceiling making sure that the support bar is rotated out of the way.

Rotate the support bar underneath the panels edges and set the panels onto the bar ensuring that the pin on the bar extends through the holes on the two panels.

Install the table retainer clip the same way that you did on the other end of the panels, once again ensuring that the pin is fully seated in the clip.

