



SylvanSport GO Camper and Gear Winterization Recommendations

For Indoor Storage

- Follow recommendations in the GO Camper Maintenance Guide (*found below*).
- Before putting your GO tent away, make sure it is completely dry.
- Clean your kitchen counter with a gentle soap and dry completely before storing.
- Best practice for your tires is to take your GO for a monthly spin, weather permitting.
- Best practice for sleeping pads and mattresses is to store them inflated with valves open.
- Best practice for sleeping bags is to store them uncompressed, in a mesh or cloth laundry bag.

For Outdoor Storage

- Follow recommendations in the GO Camper Maintenance Guide (*found below*).
- If not completed previously for VINs 0001-3174, follow the GO Side Tube Vent Instructions (*found below*).
- Before putting your GO tent away, make sure it is completely dry.
- Cover your GO. Recommended: Coolest. Camper. Cover. <https://www.sylvansport.com/shop/go-coolest-camper-cover/>
 - Helpful hint...use a basketball in the center of cross bars, under the cover, to help move rain and snow.
- Clean your kitchen counter with a gentle soap and dry completely before storing.
- If parking your GO on soft ground, we recommend utilizing wheel blocks to prevent tire rot.
- Best practice for your tires is to take your GO for a monthly spin, weather permitting.
- Best practice for sleeping pads and mattresses is to store them inflated with valves open.
- Best practice for sleeping bags is to store them uncompressed, in a mesh or cloth laundry bag.

SylvanSport GO Camper Maintenance Guide

Trailer Cleaning *as needed*

- Trailer can be cleaned using a high pressure sprayer at a car wash or a soft sponge/rag and mild detergent.
- Do not use abrasive cleaners or hard scrubbing sponges or brushes.
- For stubborn spots: non-abrasive, orange degreasing cleaner works well.

Tent Cleaning *as needed*

- Recommended: Nikwax GO Tent Maintenance Kit <https://www.sylvansport.com/shop/nikwax-solarwash-solarproof-kit/>
- Alternative: Tent can be cleaned with a mild detergent and a soft sponge.

Wheel Maintenance *before each use*

Lug Nuts

- Ensure lug nuts are properly tightened using a $\frac{3}{4}$ " tire iron or $\frac{3}{4}$ " deep socket wrench.
- Tightening should be done in stages going around the bolt circle in a standard crossing pattern.



- Stage 1: 20-25 ft lbs | Stage 2: 34-40 ft lbs | Stage 3: 50-75 ft lbs
- When first installing a wheel, lug nuts should be checked after 10 miles, 25 miles, 50 miles, and periodically after that.

Tire Pressure

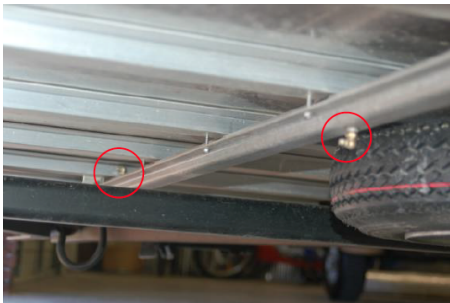
- Main tire pressure: 50 psi (cold)
- Spare tire pressure: 90 psi (cold)

Hubs **12,000 miles or 12 months**

- Lubricate the hubs to increase the life of the bearings, tires, and for safety.
- Recommended: SylvanSport GO Maintenance Kit
<https://www.sylvansport.com/shop/sylvansport-go-go-easy-maintenance-kit/>
- Remove rubber cap at center of hub.
- Attach standard automotive grease gun with multi-purpose No.2 grade lubricant to zerk fitting.
- Squeeze the handle 8-10 times and remove grease gun.
- Using a clean rag, clean excess grease on the outside port cover.
- Attach rubber cap to center of hub.

Lift System **12,000 miles or 12 months**

- Recommended: SylvanSport GO Maintenance Kit
<https://www.sylvansport.com/shop/sylvansport-go-go-easy-maintenance-kit/>
- Lubricate the lift system to help ensure smooth raising and lowering of the equipment rack/tent pod.
- Locate the lift system master tube that runs along the center of the frame on the underside of the deck.
- Locate the 2 zerk grease fittings.



- With the equipment rack in its lowest position, inject 4-5 pumps of multipurpose No. 2 lubricant into 1 of the zerk fittings.
- Raise the equipment rack/tent pod approx. 1ft and inject 2-3 pumps of lubricant into the zerk fittings.
- Repeat until the equipment rack/tent pod is fully extended.
- Lower the equipment rack/tent pod and repeat the steps for the second zerk fitting.

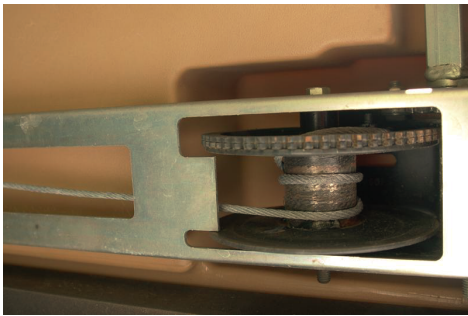
Lift System: Telescoping Tubes

- Using a silicone lubricant or “dry lube” apply a light coating to the 4 telescoping lift tubes and wipe off any excess with a dry, clean rag.
- Do NOT use oil-based lubricants (i.e. regular WD-40).



Lift System: Cable

- Locate the lift system winch and cable under the front storage box.
- Check that the winch raises and lowers properly and inspect that the cable is not cut or frayed.

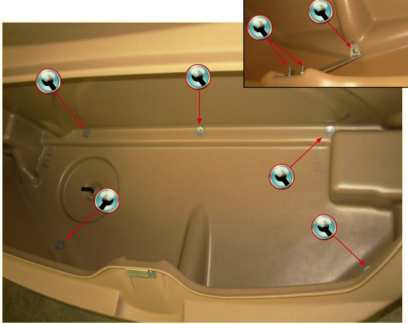


- Locate the pulley and cable under the deck at the rear of the GO.
- Inspect that the pulleys are rotating properly and that the cable is not cut or frayed.



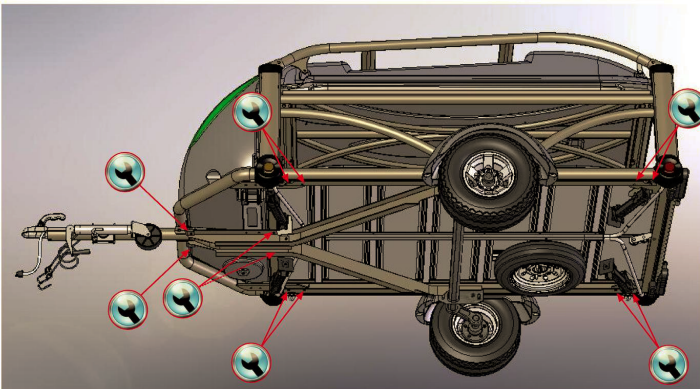
Storage Box

- Locate the (6) 5/16" screws on the inside bottom of the storage box and the (3) 10mm screws for the latch support bracket.
- Ensure that they are all snug. Do not overtighten.



Frame

- Locate the bolted connections at the frame junctions on the underside of the GO frame.
- Inspect that the bolts are tight.
- Note: frame connector bolts are all metric sizes.



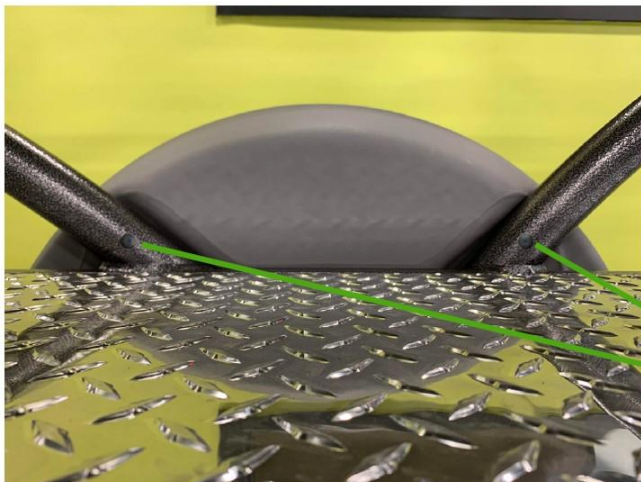
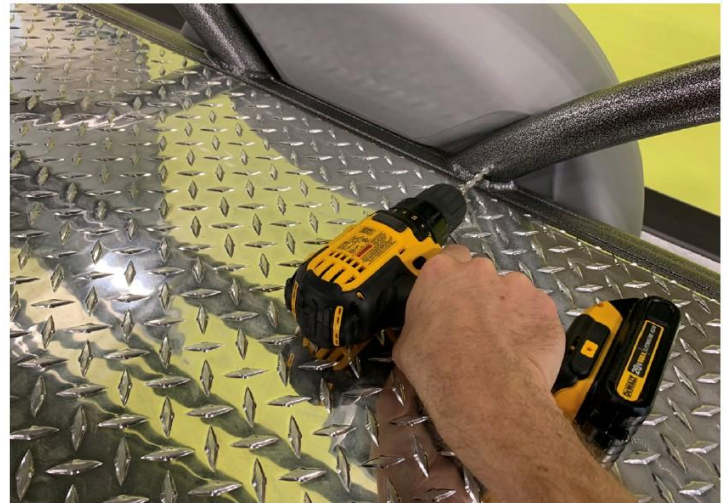
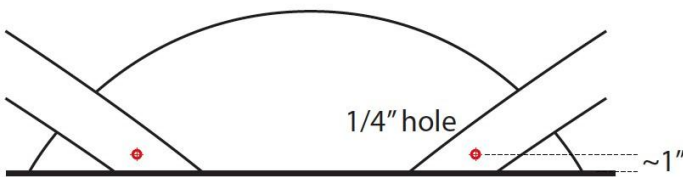


SylvanSport GO Camper Side Tube Vent Instructions (for VINs 0001-3174) (to prevent water from accumulating in side tubes)



This is the area to be addressed.

Step 1: Drill a 1/4" hole in each of the 4 lower metal arcs. This hole should be roughly 1" above the deck, and should only go through one side.



Step 2: Press a pine tree clip into each of the 4 holes.

